

# DUVAL STREET | REVITALIZATION & RESILIENCY PLAN

## 2023 - AVERAGE HIGH TIDE & CATEGORY 1 STORM SURGE



### INSTRUCTIONS

Disclaimer: The recipient accepts full responsibility for verifying the accuracy and completeness of the data. The recipient releases Stantec, its officers, employees, consultants and agents, from any and all claims arising in any way from the content or provision of the data.

### LEGENDS

- Street Centerline
- Compound Inundation (Feet Above Ground)
- Less Than A Foot
- 01 - 02
- 02 - 03
- 03 - 04
- 04 - 05

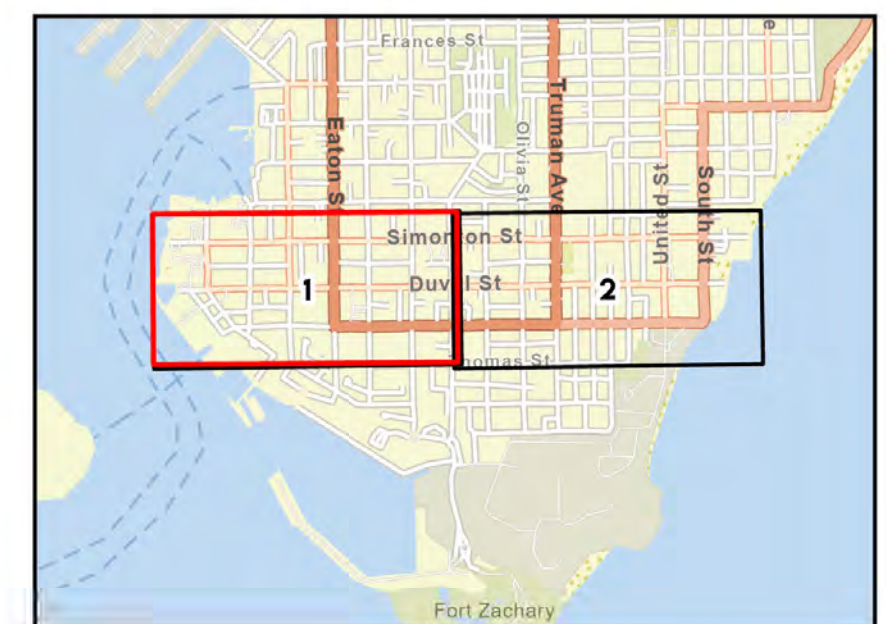
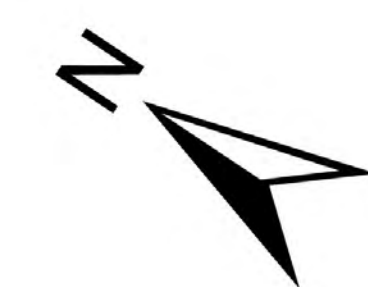
### COMMENTS

2023 Average High Tide (0.7 ft. NAVD88)  
 Category 1 Storm Surge - Direct Hit (4.5 ft.)

Duval Street - Key West  
 Monroe County, Florida

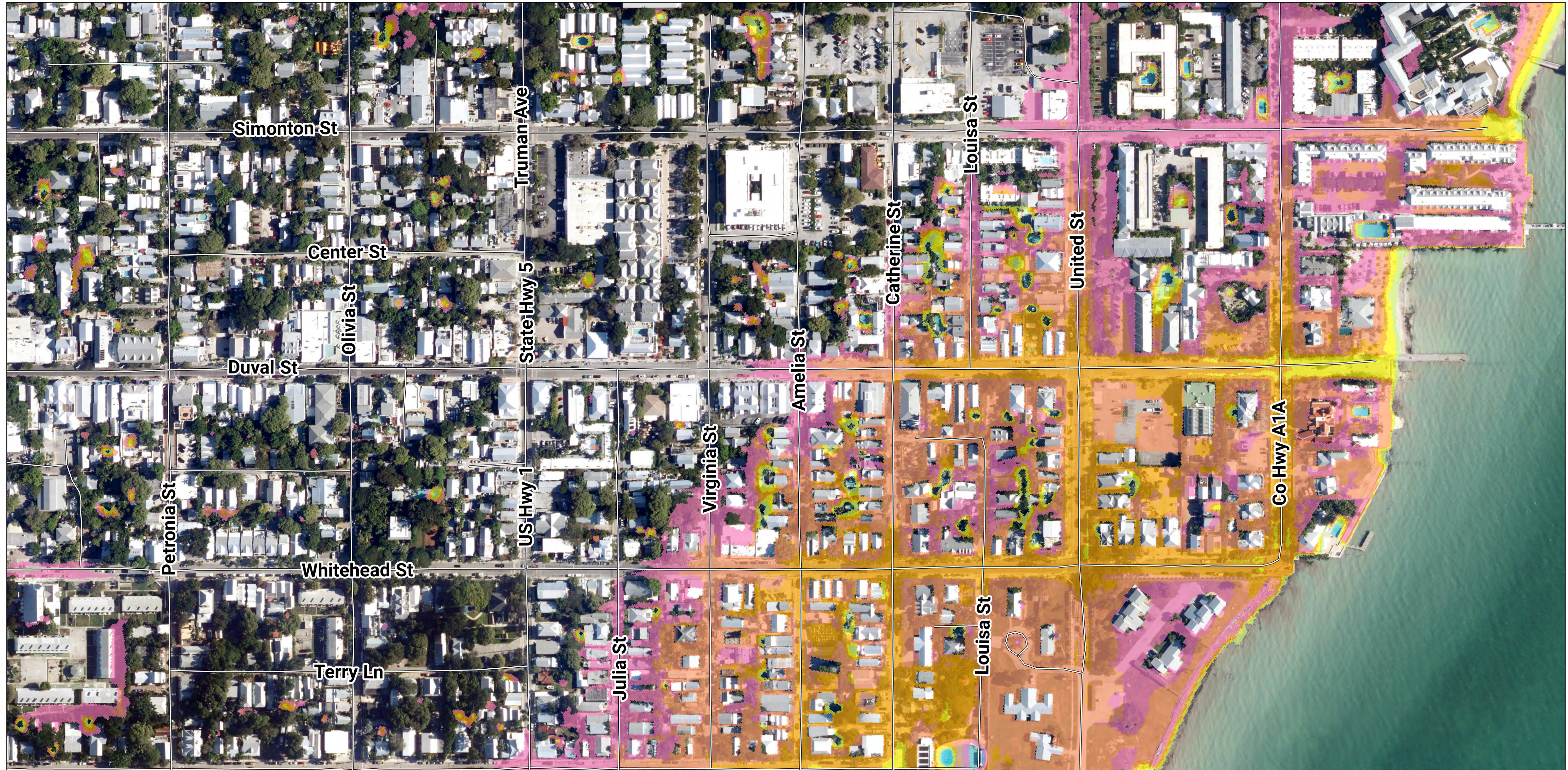
- Coordinate System: NAD 1983 StatePlane Florida East FIPS 0901 Feet
- Scale: At original document scale of 24x36 in. 1:100 ft.
- Imagery: ESRI Basemap

0 50 100 Feet



# DUVAL STREET | REVITALIZATION & RESILIENCY PLAN

## 2023 - AVERAGE HIGH TIDE & CATEGORY 1 STORM SURGE



### INSTRUCTIONS

Disclaimer: The recipient accepts full responsibility for verifying the accuracy and completeness of the data. The recipient releases Stantec, its officers, employees, consultants and agents, from any and all claims arising in any way from the content or provision of the data.

### LEGENDS

- Street Centerline
- Compound Inundation (Feet Above Ground)
- Less Than A Foot
- 01 - 02
- 02 - 03
- 03 - 04
- 04 - 05

### COMMENTS

2023 Average High Tide (0.7 ft. NAVD88)  
 Category 1 Storm Surge - Direct Hit (4.5 ft.)

Duval Street - Key West  
 Monroe County, Florida

1. Coordinate System: NAD 1983 StatePlane Florida East FIPS 0901 Feet
2. Scale: At original document scale of 24x36 in. 1:100 ft.
3. Imagery: ESRI Basemap

0 50 100 Feet

