

DUVAL STREET | REVITALIZATION & RESILIENCY PLAN

2040 - HIGH TIDE, SEA LEVEL RISE & CATEGORY 1 STORM SURGE



INSTRUCTIONS

Disclaimer: The recipient accepts full responsibility for verifying the accuracy and completeness of the data. The recipient releases Stantec, its officers, employees, consultants and agents, from any and all claims arising in any way from the content or provision of the data.

LEGENDS

Street Centerline	Compound Inundation (Feet Above Ground)	Less Than 1 Foot	04 - 05
		01 - 02	05 - 06
		02 - 03	
		03 - 04	

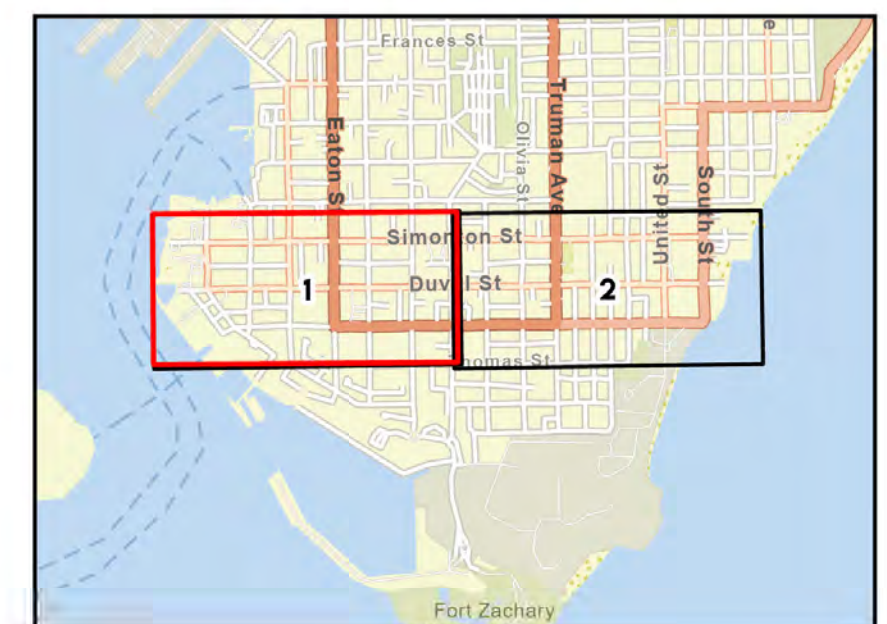
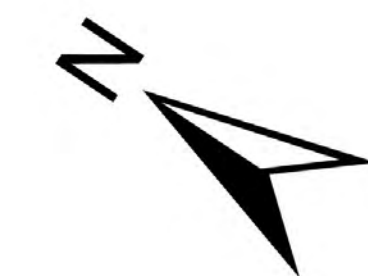
COMMENTS

Category 1 Storm Surge - Direct Hit (4.5 ft.)
Average High Tide from 2000-2023 (0.3 ft. NAVD88)
2040 Intermediate High Sea Level Rise (1.4 ft. NAVD88 - 2017 Projections)

Duval Street - Key West
Monroe County, Florida

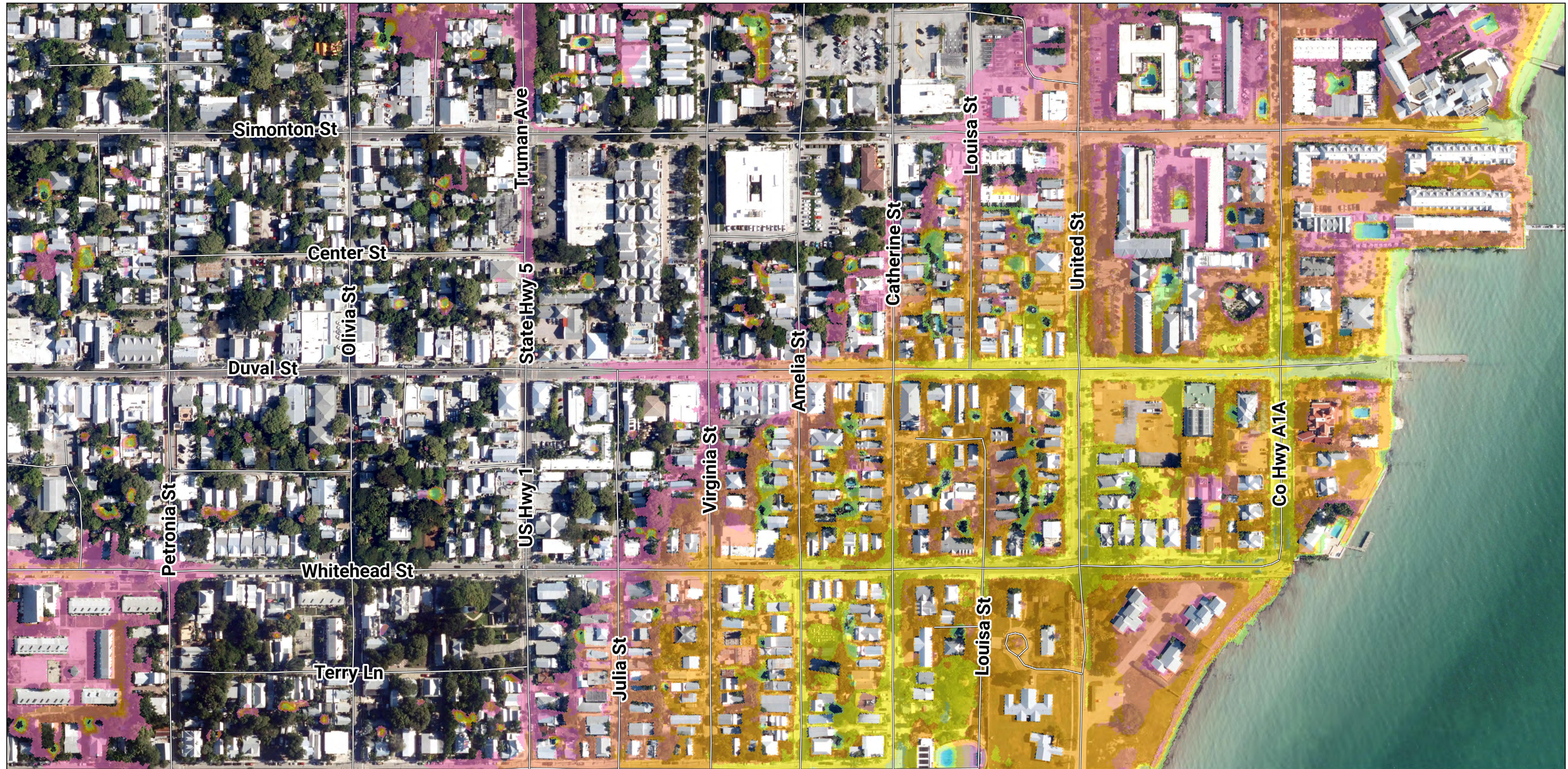
- Coordinate System: NAD 1983 StatePlane Florida East FIPS 0901 Feet
- Scale: At original document scale of 24x36 in. 1:100 ft.
- Imagery: ESRI Basemap

0 50 100 Feet



DUVAL STREET | REVITALIZATION & RESILIENCY PLAN

2040 – HIGH TIDE, SEA LEVEL RISE & CATEGORY 1 STORM SURGE



INSTRUCTIONS

Disclaimer: The recipient accepts full responsibility for verifying the accuracy and completeness of the data. The recipient releases Stantec, its officers, employees, consultants and agents, from any and all claims arising in any way from the content or provision of the data.

LEGENDS

	Street Centerline		Less Than 1 Foot		04 - 05
	01 - 02		02 - 03		05 - 06
	03 - 04				

COMMENTS

Category 1 Storm Surge - Direct Hit (4.5 ft.)
 Average High Tide from 2000-2023 (0.3 ft. NAVD88)
 2040 Intermediate High Sea Level Rise (1.4 ft. NAVD88 - 2017 Projections)

Duval Street - Key West
 Monroe County, Florida

- Coordinate System: NAD 1983 StatePlane Florida East FIPS 0901 Feet
- Scale: At original document scale of 24x36 in. 1:100 ft.
- Imagery: ESRI Basemap

