

# DUVAL STREET | REVITALIZATION & RESILIENCY PLAN

## 2040 - HIGH TIDE, SEA LEVEL RISE & CATEGORY 3 STORM SURGE



### INSTRUCTIONS

Disclaimer: The recipient accepts full responsibility for verifying the accuracy and completeness of the data. The recipient releases Stantec, its officers, employees, consultants and agents, from any and all claims arising in any way from the content or provision of the data.

### LEGENDS

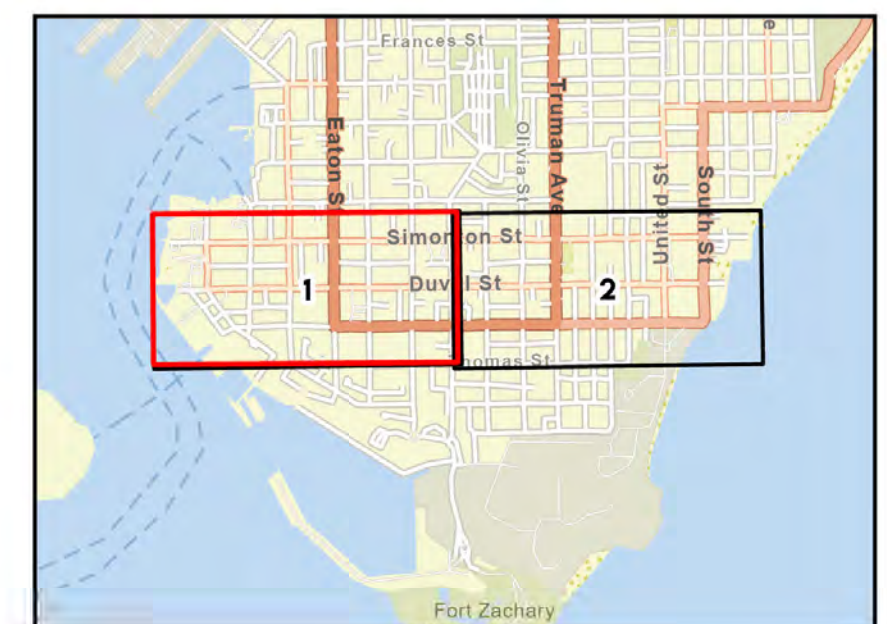
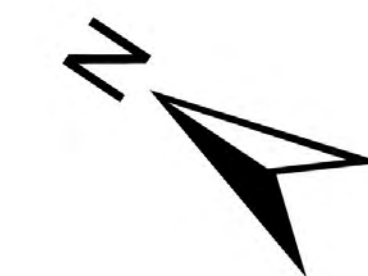
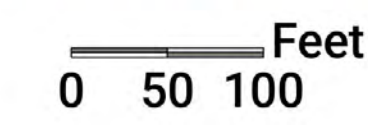
	Street Centerline		<b>Compound Inundation (Feet Above Ground)</b>		Less Than 1 Foot		05 - 06		10 - 11
			01 - 02		06 - 07		07 - 08		11 - 12
			02 - 03		08 - 09		09 - 10		
			03 - 04		04 - 05				
			04 - 05						

### COMMENTS

Category 3 Storm Surge - Direct Hit (10.5 ft.)  
 Average High Tide from 2000-2023 (0.3 ft. NAVD88)  
 2040 Intermediate High Sea Level Rise (1.4 ft. NAVD88 - 2017 Projections)

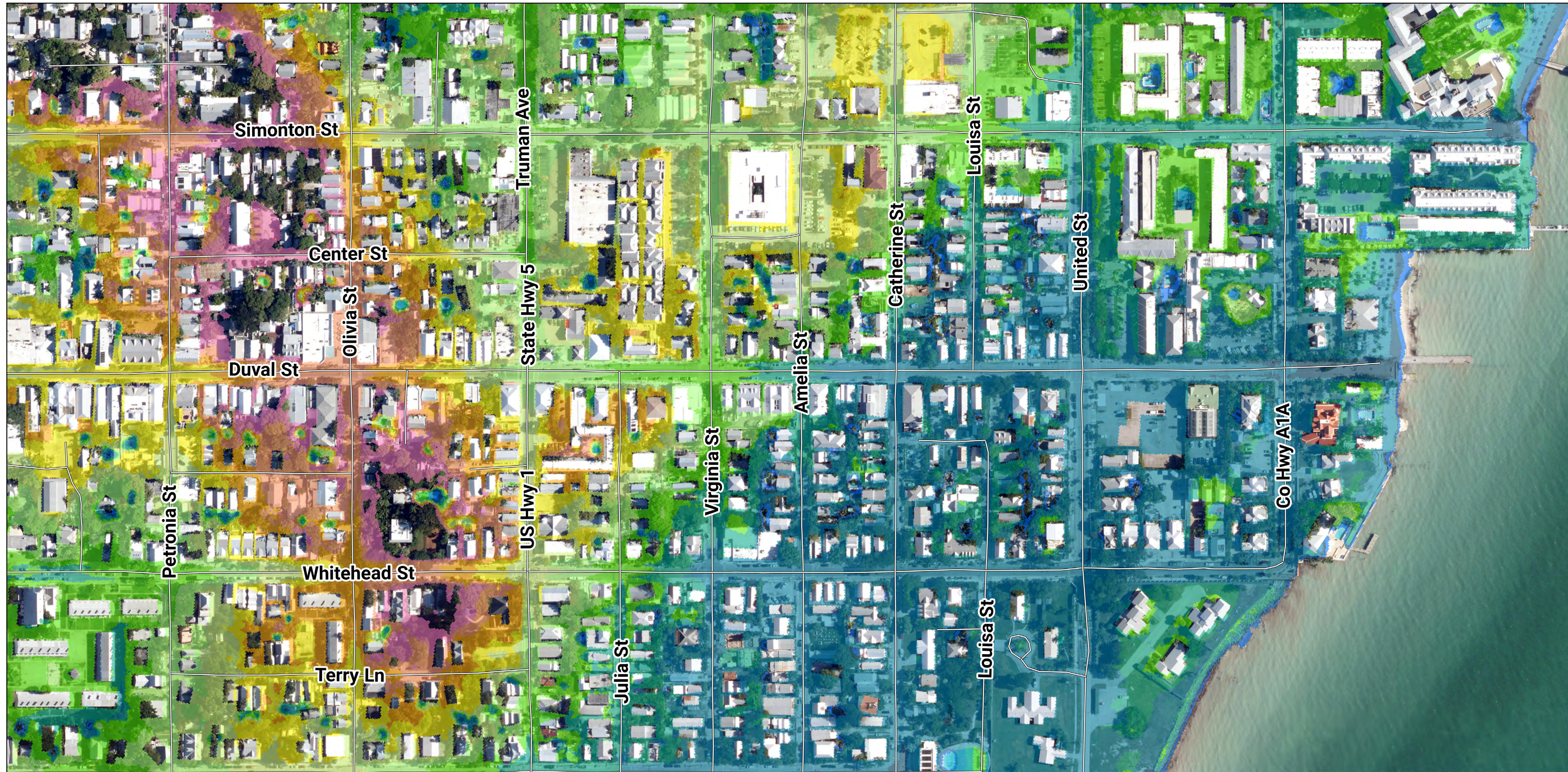
Duval Street - Key West  
 Monroe County, Florida

- Coordinate System: NAD 1983 StatePlane Florida East FIPS 0901 Feet
- Scale: At original document scale of 24x36 in. 1:100 ft.
- Imagery: ESRI Basemap



# DUVAL STREET | REVITALIZATION & RESILIENCY PLAN

## 2040 - HIGH TIDE, SEA LEVEL RISE & CATEGORY 3 STORM SURGE



### INSTRUCTIONS

Disclaimer: The recipient accepts full responsibility for verifying the accuracy and completeness of the data. The recipient releases Stantec, its officers, employees, consultants and agents, from any and all claims arising in any way from the content or provision of the data.

### LEGENDS

	<b>Compound Inundation (Feet Above Ground)</b>	Less Than 1 Foot	05 - 06	10 - 11
		01 - 02	06 - 07	11 - 12
		02 - 03	07 - 08	
		03 - 04	08 - 09	
		04 - 05	09 - 10	

### COMMENTS

Category 3 Storm Surge - Direct Hit (10.5 ft.)  
 Average High Tide from 2000-2023 (0.3 ft. NAVD88)  
 2040 Intermediate High Sea Level Rise (1.4 ft. NAVD88 - 2017 Projections)

Duval Street - Key West  
 Monroe County, Florida

- Coordinate System: NAD 1983 StatePlane Florida East FIPS 0901 Feet
- Scale: At original document scale of 24x36 in. 1:100 ft.
- Imagery: ESRI Basemap

